

Loomis Basin **Horsemen's Association**
P.O. Box 2326 Loomis CA 95650

Volume 31 Issue 3

MARCH 2015

Newsletter

Highlights:


- *Traylor Ranch*
Pg 2
- *February Mtng Minutes*
Pg 3
- *Lost/Found & Classifieds*
Pg 3
- *Board Mtng Minutes*
Pg 4
- *Alpine Butterfly Knot*
Pg 5
- *Cow Clinic*
Pg 6
- *Membership & Ad Fees*
Pg 7
- *Briones Regional Park*
Pg 8,9
- *Leave Only Hoof Prints*
Pg 10
- *Membership Forms*
Pg 12
- *Next Meeting*
Pg 13

PRESIDENTS MESSAGE by Maureen Henderson

Happy March everyone. Spring has arrived early, the weather has been beautiful and hopefully all of you have been going out and taking advantage of our California sunshine, whether it be schooling your horse for the upcoming show season, or out enjoying nature by way of trail riding.

Your Board has been busy putting together a fun and educational program for you, our membership. Check out the "Events" schedule under the "Arena Info" tab on our home page, which you can now access by going to www.LBHA.us. This is a new domain name for our organization which will make it easier for you to remember and access the LBHA home page.

We plan on having more events at our arena and have already scheduled a couple of cow clinics, introduction to Dressage, an Obstacle Play Day, a saddle fitting demo and horsemanship pattern day. During the summer we plan on having our meetings in the form of an event on Sunday mornings at the arena in place of our usual Wednesday evening meetings so it can be a fun family event. This month we will be having our regular monthly meeting on Wednesday, March 18 at Round Table. Hope to see you there.



Email to LBHA has been changed!
LBHA@garlic.com

SUPPORTING LBHA HELPS SAVE AND MAINTAIN OUR TRAILS, THE ARENA AT THE PARK , TRAYLOR RANCH AND THE RURAL LIFESTYLE

2015 OFFICERS AND BOARD MEMBERS

COMMITTEE HEADS

PRESIDENT:	Maureen Henderson	916-663-9362
VICE PRES:	Pat Gibbs	916-765-3006
TREASURER:	Donna Kelly	916-956-6248
SECRETARY:	Lisa Horning	916-251-3394

BOARD OF DIRECTORS

Dave Faoro	916-663-3437
Judy Lew	916-546-6118
Liz Daffner	916-708-1244
Kathy Dombrowski	916-652-5204

COMMITTEE HEADS

Trail Info.	Robert Sydnor	916 335-1441
Trail Maint.	Open	
Historian	Donna Kelly	916 956-6248
Publicity-	Liz Daffner	916-708-1244
Horseshow	Janis Rau	916-652-0894
Horseshow	Lisa Horning	
Traylor Ranch NR	Dave Faoro	916-663-3437
County Liaison-Trails	Debbie Murphy	916-719-6265
County Liaison-Trails	Pat Gibbs	916-765-3006
Newsletter	Denise Howell	916-207-2543
Arena	Kathy Dombrowski	916 652-5204
Arena	Denise Howell	916-207-2543
Membership	Kathy Dombrowski	916 652-5204

PLACER COUNTY PARKS ADMINISTRATOR

John Ramirez 530 889-6807

PLACER COUNTY AG COMMISSIONER

Joshua Huntsinger 530 889-7326

CALIFORNIA STATE PARKS – Gold Fields District

Scott Nakagi 916 988-0205 ext 226
 Brian Moses (trails) 916 240-7198
 State Parks Dispatch 916 358-1300
 (Call above number for incidents in State Parks)

The essential joy of being with horses is that it brings us in contact with the rare elements of grace, beauty, spirit, and fire.

Sharon Ralls Lemon



TRAYLOR RANCH NATURE RESERVE

Our first workday of 2015 is on March 28. As a reminder our Traylor Ranch work days are the 4th Saturday of the month.

We have had sufficient rains that the grass is growing well and so I expect we'll have a lot to do on our first workday of the year.

We'll need to mow and fill holes in the trails. We could use a couple of teams with wheel barrows and shovels to fill the rodent holes.

I'll bring extra wheel barrows so no need to drag yours over. We also could use two or three people with weed wackers. The berries aren't growing yet so there isn't much to worry about there.

Watch your email for any updates the week before in case there are any specific requests.

If anyone has any questions on TRNR, please don't hesitate to drop me a note. If you are new to volunteering, please call me ahead and we can discuss the logistics.

Please members, if your see any issues during this stormy time of year at our Traylor Ranch, call me or send me an email. If it is an emergency, of course, call 911.

Dave Faoro

TRNR Committee Chairman,
dave_lbha@faoro.us



Minutes Loomis Basin Horseman's Association

February 18, 2015 at Round Table Pizza, Loomis

LBHA meeting was held at Roundtable Pizza in Loomis, on Wednesday, February 18th. There were approximately 30 members present. The meeting was called to order by Maureen at 7:02p.m.

Judy Suter and Jaede Miloslavich, from Gold Country Trails presented a wonderful power point presentation about the Western States Safe Trail Alliance, which protects our historic trails. The main focus was trail safety and how to deal with mountain bikers.

After the presentation Pat, brought up the importance of uniting with other horse groups for safety and conservation of our trails. Please report to Park Watch, so that we have a paper trail and data base.

Bob gave a trail report. He put together a nice article about the expansion of Hidden Falls that was posted in the paper. Bob also reported that Steve Hallmark plans to re-deck El Dorado Bridge.

The meeting was adjourned by Maureen at 8:22p.m.

LBHA Secretary
Lisa Horning

Lost & Found & For Sale

Found: 2 whips at LBHA Arena
One 4 foot with no ID.
One 6 foot with colored tape
Both black.
Call Kathy Dombrowski 916-652-5204

Classifieds are Free to Members!

Needs Home: Scout . Female Aussie. AKC. 2 years old.

Cross on working lines and show. Obedience Lessons included in purchase.

Scout is completely house broken, crate trained and travels extremely well. She is spayed. Current on shots. She loves people. Knows a few tricks.

She needs a forever home. \$500

Please email: **Pamela McCoy** -
pamelamc@surewest.net



Link to our Classifieds on our LBHA Website
<http://www.garlic.com/~lbha/forsale.htm> or <http://www.lbha.us>

Loomis Basin Horsemen's Association Board Meeting Minutes February 4, 2015, held at Roundtable Pizza in Loomis

In attendance – Liz, Lisa, Kathy D. Pat, Dave, Maureen, Denise, Judy L. and Debbie.

The board meeting was called to order at 6:15p.m.

Maureen began a discussion about what the LBHA goals for this year will be. Her vision included, work on trails, increasing membership and more club activities. Pat's ideas included wanting a better network of communication with surrounding equine groups, so we can have a united voice on issues. Having the equestrian and bike groups coming together to working more closely. Possibly planning an informal meeting with the other groups to hash out differences in land management. Pat will also draw up a rough draft for a subcommittee for trails. Kathy D. recommended that we raise membership dues and the arena fee.

Dave suggested that there should be a protocol that the board could follow for emails and voting. Liz asked that the board send clear email headers and be clear in the email content by creating a template to follow. Liz made a motion to amend by-laws and protocols. Dave seconded the motion. Judy L. agreed to draft the new changes to the by-laws and protocols and will bring it to our next meeting to vote on.

Liz went over the schedule for Wednesday meeting topics. So far..... February- Western Trail Alliance, March- Vivian – Western Dressage, April- dressage at the arena, May- LBEC. Maureen mentioned we have mostly western play/fun days suggested that we need more English topics.

Liz's next discussion was about weekend events. So far.....April 12 – Dressage, June -Trail obstacle day, July – Sierra Saddlery saddle fitting clinic, August- Horsemanship. Liz and Kathy will work so that all events will be posted on our events calendar. Pat suggested that we make it clear to all members that all events are for all disciplines, ages and experience. Everyone is welcome. Debbie began the discussion about newsletter vs website items. Denise would like to condense the newsletter and move some of the items to the website and at other times utilize Face Book with direct links to our webpage. Some items will go out directly to membership via email.

Denise and Debbie began a discussion about how much the club has agreed for donations for 2015. Debbie makes a motion to table the subject until Donna has returned. Lisa seconded the motion.

Liz has been working on signage for the arena. She has called a company and received a quote of \$99. Liz wrote and read the script for the sign. The board agreed on a condensed version of the script. The board requested to see a sign proof. Dave and Judy asked if we could have several quotes on multiple signs, which Liz agreed to get. The board will determine the location of the sign or signs at a later date. Liz also drafted several flyers for the LBHA arena and Traylor ranch that we can display until the sign is up.

Debbie put out flyers for Leave Only Hoof Prints at the arena and Traylor Ranch. Kathy will see if we can get more signs from the county and Dave agreed to install them.

The advertisement for The Equestrian Connection is tabled until our next meeting. Liz's husband Brad took several great pictures to be used for marketing, for Facebook and our website. Liz will contact Ken at EC to add all our events to the magazines free listing.

Maureen suggested that we have another board meeting on March 4th, 6 p.m. at the Roundtable Pizza in Loomis. The next board meeting scheduled after this is for June 17th, 6 p.m. at RT Pizza. Thereafter board the board agrees to meet quarterly.

(cont'd from Pg 4)

After some discussion, Kathy D. made a motion to give Traylor Ranch 25% of the profits from the Horse Show. Maureen 2nd the motion. The board was in complete agreement. A new commitment will be determined next year.

Kathy D. brought up a list of complaints about Traylor Ranch. Dave will address. This topic is tabled until the next board meeting.

The board meeting adjourned at 8:22 p.m.

LBHA Secretary,
Lisa Horning

Tie an Alpine Butterfly Knot

Simply put, the alpine butterfly knot is a knot used to form a fixed loop in the middle of a rope. It is tied in the bight, which means that it can be made in a rope without access to either of the ends; this is a large advantage when working with the long ropes commonly used when camping with horses and mules. An excellent mid-line rigging knot that is symmetrical and handles multi-directional loads well, the butterfly loop is an excellent knot to use when setting up a highline as it is very secure, ties easily, and unties quickly when breaking camp.

Alpine Butterfly

Tying an Alpine Butterfly is comprised of just a few quick steps:

- Make two twists in the same direction to form the two loops in the rope.
- Wrap the outer loop around the standing portion of the rope.
-

Pull the outer loop through the hole of the inner loop.

By learning and then using the Alpine Butterfly when setting up camp you will save space and weight in your saddle bags as well as time when breaking camp.

Pictured below is an example of an Alpine Butterfly with a carabineer attached as you would do when attaching a leadline for holding your mount overnight.

- See more at: <http://trailmeister.com/tie-an-alpine-butterfly-knot-2/#sthash.vWVvDQCH.dpuf>



COW 101/102 AND CATTLE SORTING CLINICS ANNOUNCED!

Get your boots on and come learn at the LBHA Arena, Loomis, Ca. Expert instruction by Kathy and Elliott Roberts. We supply the cows and know- how and you supply the FUN!- Safe and slow gets its COW 101

Sunday, March 15th 9am to 12pm \$70

(Rain Date: March 29th)

This class is designed as an introduction to cattle work for horse and rider. It is a beginner class geared to getting your horse accustomed to being around cattle and learning how to move them successfully.

You may take Cow 101 multiple times.

Sunday, March 15th 1pm to 4pm \$70

(Rain Date: March 29th)

This class is for the horse and rider who have either previously taken Cow 101 or you feel your horse has adequate experience working cattle to be able to move the cattle more confidently within the herd. This class will start with instruction on the use of all your aides utilized for cow work. You should come away from this class with a better feel of how to ride your horse more effectively in this environment.

CATTLE SORTING

Sunday, April 19th TWO SESSIONS: Session 1-10am to 12-pm, Session 2-1pm to 3pm

\$30 per session per rider.

Each session will teach you the fundamentals of team sorting. The clinic will give you the tools to be more effective in working the herd to “sort” the cattle utilizing actual sorting techniques. The cattle will be numbered and you will learn how to methodically get the cattle sorted. In this event, slow and efficient is fast!

CONTACT: Debbie Murphy 916-719-6265 or email: equuspassage@aol.com

YOU MUST PREREGISTER and PREPAY to hold your spot. ONLY 12 riders per clinic session. (4 spots left)

YOU MUST be a member of LBHA to participate however, you may join day of event for additional **AUDITORS WELCOME**

\$15(good all year).

GENERAL INFORMATION FOR ALL CLINICS

Helmets required for those under 18 and suggested for all riders.
Please be saddled and ready to ride at start time!
All breeds, disciplines, saddle types are welcome.



MEMBERSHIP

Please renew your membership. The list of those that need to renew for can be found on our website. Please renew, we need YOU!

Please Renew Today!

If you are not getting e-mails from LBHA, we may not have the correct e-mail or you are blocking LBHA. The Newsletter goes on line the first week of each month, so if you do not get a notice, just check the webpage and then get the correct e-mail to LBHA.

Being an LBHA Member is a great way to give back to our community. We thank you in advance. Thank you.

AD FEES For LBHA Members

(Non-Members add \$10 to below fees)

NEWSLETTER ADS Deadline is the 25th of the month
 ½ page: 1year \$60 Includes Business card on Website.
 ½ page: 6mos \$30

Business Card Ad per issue: \$10 / issue
 Business Card Ad/year: \$40/year includes card on Website

DIRECTORY ADS Deadline for Directory ads is March 1
 Full Page Ad: \$25
 ½ Page Ad: \$15
 Business Card Ad: \$10 - Free for **LBHA Business Members**

WEB ADS

Business Card Ad – one year Members \$40
 Classified Ads- Free to Members

NOTE add \$10 to fee for Non-LBHA members



Blanket Repairs R Us
 "We Wash & Repair Horse Blankets"
Vonnie Bays
 Owner / Manager
 697 Havenwood Drive
 Lincoln, Ca 95648
 (916) 645-9000
 lbays@wavecable.com
 WEB Site: Google-Blanket Repairs R Us
 Exp 12/15



SCOTT'S CORNER
HAY & FEED & TACK
 Keely Paregian — Proprietor
 (916) 663-4124
 2001 Rattlesnake Road Newcastle, CA 95658
 www.scottscornerhay.com scottscornerhay@gmail.com
 For animals large and small.



COLDWELL BANKER
 RESIDENTIAL BROKERAGE
"The Howell Team"
Dean Howell 916-599.9338
 dean.howell@cbnorcal.com
 CalBRE# 00982650
Denise Howell 916.207.2543
 denise.howell@cbnorcal.com
 CalBRE# 01110357
www.deananddenisehowell.com
 500 Auburn Folsom Rd. #300
 Auburn, CA 95603


Equestrian Assembly Areas within Briones Regional Park

East Bay Regional Park District, Contra Costa County

by Robert H. Sydnor, AERC Trail Master and Engineering Geologist

March 2015

Introduction

Briones Regional Park is part of the East Bay Regional Park District within Contra Costa County on a former cattle ranch. It has sweeping views of Mount Diablo, the Berkeley Hills, and the San Francisco Bay area. Briones Regional Park is located west of Pleasant Hill and southwest from Martinez.

This is a suburban park, so besides horses, there are lots of day-hikers of all ages, dog-walkers, scout troops, family picnickers, mountain bikers, and runners.

For complete details, trails maps, and current information, please visit their website: <http://www.ebparcs.org/parks/briones#gsc.tab=0> phone: 888-327-2757

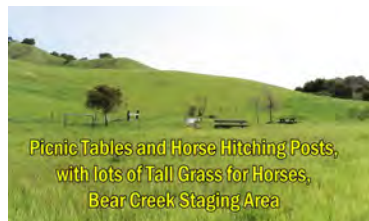
There are two equestrian staging areas: Alhambra Creek Staging Area (on the north), and Bear Creek Staging Area (on the south). Bear Creek is preferred by equestrians because it has fewer city-folks and lots of space for horse trailer parking. There is a \$3 parking fee (=bring cash), and a season pass is available for frequent riders.



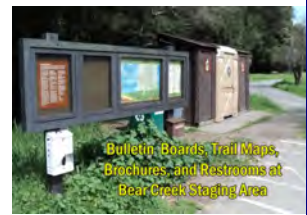
Horse Trailer Parking Lot, Bear Creek Staging Area



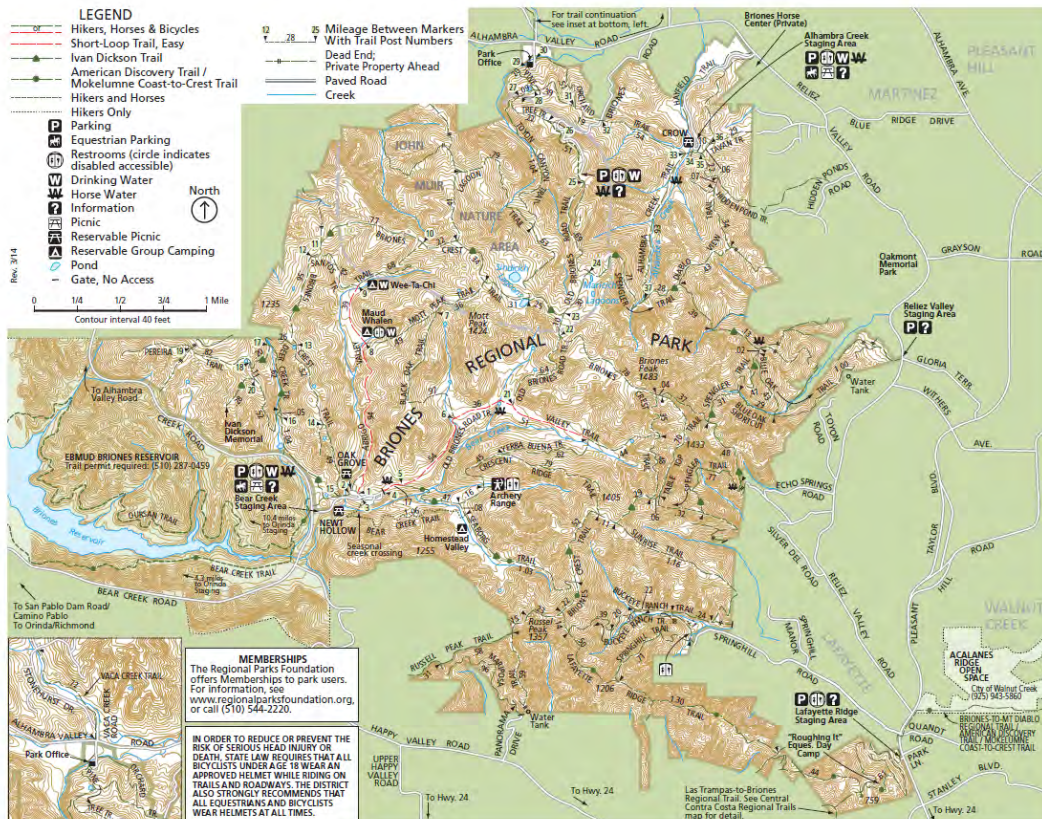
Kiosk and Park Ranger's Truck, Bear Creek Staging Area



Picnic Tables and Horse Hitching Posts, with lots of Tall Grass for Horses, Bear Creek Staging Area



Bulletin Boards, Trail Maps, Brochures, and Restrooms at Bear Creek Staging Area



The detailed trail map shown above is not legible at this scale. So, go to the website on the previous page, obtain the .pdf directly from East Bay Regional Park District, and print it using your home computer. Then ride your horse with this useful trail-map. There are no free maps at the trailheads, but this map is posted on a number of bulletin boards within the park.

(Cont'd Page 9)

Park Gate with Horse Bypass leading to the Seaborg Trail



Dr. Glenn Seaborg won the Nobel Prize in Chemistry, served on the U.S. Atomic Energy Commission, and was Chancellor of the University of California at Berkeley. He lived nearby, so he and his wife hiked here nearly every weekend. He was instrumental in creating Bionces Regional Park, and the Park District named one of the trails after Dr. Seaborg, Nobel Laureate.

Below, note the wide trails, open meadows with lots of green grass for your horse, and splendid distant views of the Diablo Valley and Mount Diablo. The trails are well-marked with numbers keyed to the trail map; this is Marker #22.

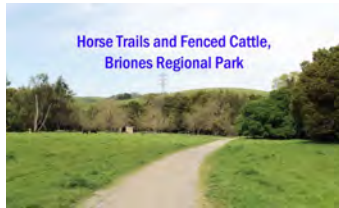


Many of the current trails are full-width ranch roads with cattle gates.

The historic Briones wagon road is at left, and the Seaborg Trail is at right. Since this is a working cattle ranch, there are a number of cattle-gates which park users need to open and close.



Wide Trails
Open Meadows
Distant Views
Well-Marked Trails
Within Briones Regional Park



Horse Trails and Fenced Cattle, Briones Regional Park



Typical Views in Briones Regional Park



Alhambra Creek Staging Area with ample parking space for horse trailers

39th Annual Morgan Mother Lode Horse Show

September 4th—6th, 2015



Class A USEF Recognized Show
Dressage,
Trail,
Jumping,
Carriage, &
Opportunity Classes open to ALL BREEDS!

Cowboy Dressage/Western Dressage Schooling Show
Thursday, September 3rd, 2015
(held the day before show)

WHERE:
Murieta Equestrian Center
Rancho Murieta, CA
CONTACT:
Ron Smith (530) 268-3881
FACEBOOK:
Morgan Mother Lode Morgan Show

MARK YOUR CALENDAR AND COME SHOW WITH US !!



Leave only HOOF PRINTS



The Placer County Parks Division has partnered with several equestrian based organizations to develop and implement the "LEAVE ONLY HOOF PRINTS" program. Leave Only Hoof Prints is a program where horses leave only great impressions.

- To those who have already picked up after your horses, THANK YOU!
- Do not spread manure to the adjoining grass and bushes.
Take it home with you.
- Please pick up all manure around your trailer.
Please do not clean out your trailer at any staging area
Take it home with you.
- LEAVE ONLY HOOF PRINTS

in the staging, parking and picnic areas.

Includes Hidden Falls, Traylor Ranch, Sterling Point Staging Area, & the LBHA Arena Trailer Parking areas (in front of Red Gate and in actual Trailer Parking Area).





**Loomis Basin
Equine Medical Center, Inc.**

Office Hours
Monday thru Saturday
8:00am - 6pm

Appointment Hours
Monday thru Saturday
9:00am - 5pm

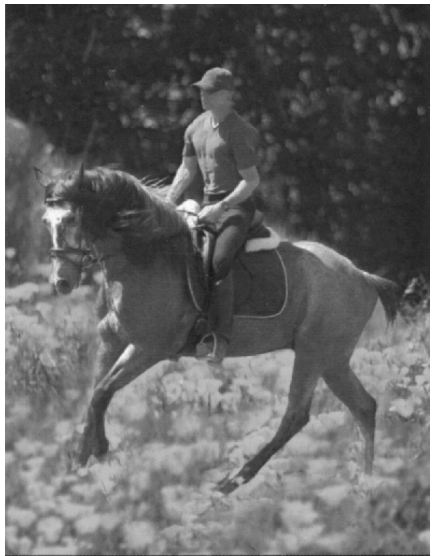
In-house & Ambulatory Emergency Services available 24 hours/7 days

(916) 652-7645
2973 Penryn Road Penryn, CA 95663
Visit us at: lbemc.com

DOCTORS

Langdon Fielding, DVM, Dipl ACVECC
Catherine Jacobs, DVM
Jill Higgins, DVM
Robert Morgan, DVM
Diana Stolba, DVM
Eduardo DeLaCruz, DVM
Jennifer Mayer, VMD
Emily Wilson, DVM
Elizabeth Howard, DVM


Jason Errico, DVM Dipl ACVS - Surgery
Dominic Dawson Soto, DVM Dipl ACVIM - Internal Medicine



Martin Courtney
Dressage Training
(916) 719-5789
MCDressage.Shutterfly.com

Knicker Knob

STABLE



No expiration

LOOMIS, CALIFORNIA

Conveniently located near Horseshoe Bar Road and Auburn Folsom Road and within riding distance to the Folsom Lake trails. Knicker Knob has long been known in the Gold Country equestrian community for producing safe and knowledgeable horsemen.

Boarding/Lesson special: Boarders at Knicker Knob Stable can participate in free lessons every Friday 5:30-7pm during Daylight Savings Time. Non-boarders can trailer in for lessons for \$20 each. Lessons are taught by Terry Haney.

Boarding barn stalls | pipe corrals | pasture from \$305

Amenities 140' X 70' lighted arena | 50' round pen grass turnout | large wash rack | indoor grain room tack rooms | bathroom | refrigerator | shaded picnic area

Riding lessons Offered by our teaching staff with a combined experience of 60 years of teaching. Group \$25 | semi private \$30 | private \$40

Terry 916.778.8651 Kathy 916.204.0346
www.knickerknobstable.com [Facebook.com/KnickerKnobStable](https://www.facebook.com/KnickerKnobStable)

MEMBERSHIP FORM
LOOMIS BASIN HORSEMEN'S ASSOCIATION

The Loomis Basin Horsemen's Association, founded in 1984, is a non-profit informational and awareness organization dedicated to the Arena at the Loomis Basin Community Park, Loomis Basin Trails, Traylor Ranch, and the preservation of the Rural Lifestyle

_____ INDIVIDUAL (\$15) _____ FAMILY (\$20) _____ BUSINESS (\$25)
Please submit business card for
Roster _____ NEW MEMBERSHIP _____ RENEWAL _____

PLEASE INDICATE COMMITTEE(S) YOU WOULD LIKE TO SERVE ON _____ CHECK AREAS OF INTEREST _____

_____ Arena	_____ Membership	_____ Trail Riding
_____ Trail	_____ Phone	_____ Western Horshesows
_____ Publicity	_____ County Liaison	_____ English Horshesows
_____ Newsletter	_____ Traylor Ranch	_____ Endurance
_____ Horshesow	_____ Anywhere	_____ Dressage
_____ Work Days	_____ Roping/Cutting	_____ Other _____

I would like to contribute _____ to the Equestrian Fund or _____ to the Traylor Ranch Fund. Contributions to either Fund are Tax Deductible and will be used for construction and maintenance of the Arena at the Loomis Basin Community Park, and for Maintenance of Basin Trails OR for Maintenance and upkeep of the Traylor Ranch Nature Reserve.

TRAILER PARKING KEYS: Keys are available to members at \$.00 and \$10 to non-LBHA members. Check here if you need a Key _____

KEY NUMBER _____ to be filled in by LBHA)

Name _____ Date _____

Business name: _____ Juniors _____

Address _____ Juniors _____

City _____ Zip _____

Phone _____ E-Mail Address _____

AMOUNT ENCLOSED for _____ Make Checks out to LBHA
DUES, TRAIL/ARENA FUND, _____ and mail to:
Or KEYS _____

TRAYLOR RANCH FUND _____ LBHA
(Please make out a separate check) _____ P. O. Box 2326
Loomis CA 95650

LOOMIS BASIN HORSEMEN'S ASSOCIATION

RELEASE AND HOLD HARMLESS AGREEMENT

The Undersigned assumes the unavoidable risks inherent in all horse-related activities, including but not limited to bodily injury and physical harm to horse, rider and spectator. The Undersigned acknowledges that horse-related activities are dangerous and that horses themselves have unpredictable temperaments which can sometimes cause injury. The Undersigned acknowledges that even the most experienced horse event sponsor, participant or horse owner cannot predict how each individual horse will react in a variety of situations and cannot guarantee my safety. THEREFORE, BY SIGNING BELOW, I KNOWINGLY ASSUME THE UNAVOIDABLE RISKS INHERENT IN ALL HORSE-RELATED ACTIVITIES, WHETHER KNOWN OR UNKNOWN, INCLUDING BUT NOT LIMITED TO BODILY INJURY AND PHYSICAL HARM TO HORSE, RIDER AND SPECTATOR, AND AGREE TO THE FOLLOWING ON BEHALF OF MYSELF AND MY SPOUSE, IF ANY:

1. I HEREBY RELEASE AND DISCHARGE LOOMIS BASIN HORSEMEN'S ASSOCIATION ("LBHA"), THE LBHA BOARD OF DIRECTORS, ALL LBHA OFFICERS AND INDIVIDUAL CLUB MEMBERS AND THEIR AGENTS, EMPLOYEES, OR REPRESENTATIVES, AS WELL AS PLACER COUNTY, (HEREINAFTER COLLECTIVELY KNOWN AS "RELEASEES") FROM ALL ACTIONS, CLAIMS OR DEMANDS I MAY NOW OR HEREAFTER HAVE FROM INJURY, DEATH OR DAMAGE RESULTING FROM MY PARTICIPATION IN ANY HORSE-RELATED ACTIVITIES SPONSORED BY LBHA, AT LOOMIS BASIN HORSEMEN'S ARENA OR AT ANY OTHER LOCATION.

2. I also EXPRESSLY WAIVE any rights I may have under California Civil Code §1542, which states: "A general release does not extend to claims which the creditor does not know or suspect to exist in his favor at the time of executing the release, which if known by him must have materially affected his settlement with the debtor."

5. I agree that I will DEFEND, INDEMNIFY AND HOLD HARMLESS Releasees against all claims, demands, and causes of action, including court costs and actual attorney's fees, arising from any proceeding or lawsuit brought against them due to any act done by me, or brought by me or for my benefit.

I HAVE READ THIS RELEASE AND WAIVER OF LIABILITY AND INDEMNITY AGREEMENT CAREFULLY AND COMPLETELY, AND FULLY UNDERSTAND ITS CONTENTS. I AM AWARE THAT THIS IS A RELEASE OF LIABILITY AND A CONTRACT BETWEEN MYSELF AND RELEASEES, AND I SIGN IT OF MY OWN FREE WILL. I FURTHER AGREE THAT NO ORAL REPRESENTATIONS, STATEMENTS OR INDUCEMENTS APART FROM THE FOREGOING WRITTEN AGREEMENT HAVE BEEN MADE, AND THAT I RELY ON NONE. THIS AGREEMENT SHALL REMAIN IN EFFECT UNTIL REVOKED IN WRITING BY ME.

Signature(s) _____

Name (s) _____ Age, if minor _____

If minor, Parent or Guardian must sign _____

Name of Parent or Guardian: _____

- Financial Planning for Families and Businesses
- Life Insurance
- Investments



Liz Daffner
Financial Advisor

(916) 905-7526
919 Reserve Drive
Roseville, CA 95678
liz@diligencewm.com
www.diligencewm.com



Monte

Plan Today for a Better Tomorrow

Securities and investment advisory services are offered solely through Ameritas Investment Corp. (AIC). Member FINRA/SIPC. AIC and Diligence Wealth Management are not affiliated. Additional products and services may be available through Elizabeth Daffner or Diligence Wealth Management that are not offered through AIC. CA Lic. #0G96786

Next Meeting.

March 18th Round Table Pizza Parlor. Eat at 6:30, Meet at 7:00 Speaker Vivian Mevorah on Western Dressage

April 12th Sunday LBHA Arena Dressage Presentation with Martin (Marty) Courtney 9:30 am to Noon.

Exp 4/1/15

Lazy U Ranch
Massage Therapy

Tammy Haas

Certified Massage Practioner
Lic. #29837

2610 Swetzer Rd
Loomis, CA 95650

916-947-4492



Exp 11-1-15



Hannah Potter
hannahpotterartist.seekyee.com

Fine Pencil Drawings
Custom Equine Portraits
Giclee Prints and Cards

For information regarding commissions and purchases please contact:
Ron Potter, Artist's Representative
(530) 269-2766 ronpotter@pacbell.net



Tally Whoa



From the Loomis Basin Horsemen's Association

Renew your membership.

www.garlic.com/~lbha/NeedToRenew.pdf

ABOUT LBHA



The Loomis Basin Horsemen's Association founded in 1984 is a non-profit 501 (C) 3 information and awareness organization dedicated to the South Placer County Trails, Traylor Ranch, the Arena at the Loomis Basin Community Park and the Preservation of the Rural Lifestyle.

Loomis Basin Horsemen's Association

P.O. Box 2326
Loomis CA 95650

E-MAIL:
lbha@garlic.com

We're on the Web!

See us at:

www.garlic.com/~lbha

Get Info on

- Trails
- The Arena at the Park
- Meetings
- Clinics
- Traylor Ranch
- LBHA Horseshow

