

Loomis Basin Horsemen's Association

P.O. Box 2326 Loomis CA 95650

Volume 29 Issue 5

May 2013

PRESIDENTS MESSAGE by Denise Howell

Newsletter Highlights:

- *Traylor Ranch*
Pg 2
- *March Minutes*
Pg 3
- *Membership & Ad Fees*
Pg 4
- *Hidden Falls*
Pg 5
- *LBEMC New Facility*
Pg 6
- *A Note From Bob*
Pg 6
- *Hidden Falls*
Pg 7
- *Trail Predicaments*
Pg 8
- *Tips for Equine Hydration*
Pg 9
- *Membership Forms*
Pg 10
- *Next Meeting*
Pg 11

Howdy All,

Spring is here, and with it comes horse show season! I attended my first show of the year last weekend. The weather was beautiful if not a little on the warm side, the turnout was great and best of all, my young horse took it all in stride. With the loudspeakers, flapping tents and golf carts, I was able to get my horse, Beethoven shown in 2 trail classes and 2 rail classes all 3 days which makes for a very tired partner.

Last year at this time I put out a little request to our membership for ideas for articles for our newsletter with no response. I show Quarter Horses and am the President of LBHA, but that's about where my horse universe stops.

If you show/ride/train in another discipline and would like an opportunity to write a short article for our newsletter about something I've never touched on, please send your submission to deanisehowell@sbcglobal.net I'll choose a submission every month and include it in our newsletter. Feel free to write about your discipline, a special horse in your life, a current event or hot topic, a fictional story or poem or something I've not even thought of! Please submit anything of interest to YOU by the 25th of each month.

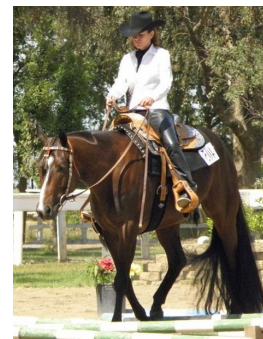
I want to give a shout out thank you to all the 4H kids that got together under the direction of Sammi Macon and put in 47 man hours grooming our arena and painting our jump standards and poles. THANK YOU THANK YOU!

The trails are open and beautiful, but the snakes are OUT so be careful. Wear your helmet and have FUN!

Tally Whoa,

*Denise Howell
& Beethoven*

Email to LBHA has been changed!
LBHA@garlic.com



SUPPORTING LBHA HELPS SAVE AND MAINTAIN OUR TRAILS, THE ARENA AT THE PARK , TRAYLOR RANCH AND THE RURAL LIFESTYLE

2012 OFFICERS AND BOARD MEMBERS

COMMITTEE HEADS

PRESIDENT:	Denise Howell	916-207-2543
VICE PRES:	Maureen Henderson	916-663-9362
TREASURER:	Donna Kelly	916-956-6248
SECRETARY:	Nancy Steuck	916-645-9659

BOARD OF DIRECTORS

Dave Faoro	916-663-3437
Bob Sydnor	916-335-1441
Janis Rau	916-652-0894
Ricky Johnson	916-778-9748
Debbie Murphy	916-719-6265

COMMITTEE HEADS

Trail Info.	Robert Sydnor	916 335-1441
Trail Maint.	Open	
Historian	Donna Kelly	916 956-6248
Publicity-	Open	
Horseshow	Janis Rau	916-652-0894
Traylor Ranch NR	Dave Faoro	916-663-3437
County Liaison-Trails	Open	
Newsletter	Denise Howell	916-207-2543
Arena	Kathy Dombrowski	916 652-5204
Membership	Kathy Dombrowski	916 652-5204

PLACER COUNTY PARKS ADMINISTRATOR

John Ramirez 530 889-6807

PLACER COUNTY AG COMMISSIONER

Joshua Huntsinger 530 889-7326

CALIFORNIA STATE PARKS – Gold Fields District

Scott Nakagi 916 988-0205 ext 226
 Brian Moses (trails) 916 240-7198
 State Parks Dispatch 916 358-1300
 (Call above number for incidents in State Parks)



TRAYLOR RANCH NATURE RESERVE

On April 27 we completed our second workday of the year. Upon arrival we were greeted with grass that had grown knee high since our last work day a month ago. A lot of mowing was ahead of us but it was all completed.

The team this month consisted of Clelia Jocoy, Dale Sloss, Wes Babcock, Jennifer Wright, Linda Potter, Jerry Potter, Mary Westfall and Dave Faoro.

The blackberries are starting to grow. We could use help with either power sheers or hand sheers for next month's workday.

The trails are in good shape. The park is looking awesome. Come on out and enjoy.

Our next work day as usual is the fourth saturday of the month, which is Saturday May 25 from 8-12am. Please mark your calendar now. Note that this is the Saturday of Memorial Day weekend.

We will need help again on the weed-wackers and well as berry pruning.

If anyone has any questions on TRNR, please don't hesitate to drop me a note.

Dave Faoro

TRNR Committee Chariman

dave_lbha@faoro.us (916) 663-3437

The child who won't lift a finger in the house is the same child who cycles madly off in the pouring rain to spend all morning mucking out a stable.
 ~Samantha Armstrong

Minutes

Correction in the February Minutes: “Kathie Perry, president of the Western States Trails, gave a report on the state of the Tevis Trail. Her association has been active in advancing a Senate Bill that would designate the trail as a “National Historic Trail.” In addition, she addressed the problems that many of the previous equestrian trails are now being designated as “multi use” trails. She stated that all the trails in State Parks are now multi use. She encouraged letter writing by members to address these issues.”

To read: “Kathie Perry, president of the Western States Trails, gave a report on the state of the Tevis Trail. Her association has been active in advancing a Senate Bill that would designate the trail as a “National Historic Trail.” In addition, she addressed the problems that any new equestrian trails will be designated as “multi use” trails. Previous trails will remain the same. She stated that all the trails in State Parks are now multi use. She encouraged letter writing by members to address these issues.

April 17, 2013

LBHA Meeting minutes

Minutes taken by Dave Faoro

Meeting opened at 7:07pm by VP Maureen Henderson as Denise was unable to attend.

Treasury Report:

Donna Kelly had no treasury report. She'll provide information for the newsletter.

Horse Expo:

June 6 is setup. Expo is 7,8,9.

Maureen is taking signups. A number of members picked times and dates to work. There are more openings. Contact Maureen.

Horse Show:

Janice Rau volunteered to manage the volunteer list for the horse show.

There was discussion on what worked and did not work from last year's show. One recommendation was to move jumper class from 2'3" to 2'6". There was a voice vote and all were in favor.

Some open items needing help:

Need an English Judge- Maureen volunteered to help look for judge.

Need a Trail Judge. (we've since gotten a trail judge)

Looking for Sponsors.

Traylor Ranch Report

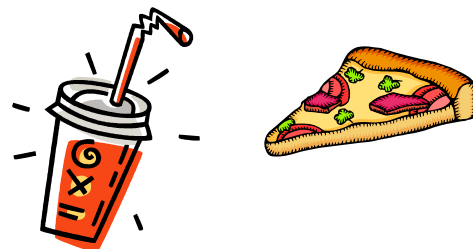
Dave Faoro noted next workday is Saturday April 27. The grass is growing well and we need weedwacker help.

Trail Report

Bob Sydnor updated us all that the 50 mile American River Ride was cancelled this year.

Bob provided an interesting power point presentation on Tevis trail work on the large flat screen Television. It worked nicely.

Meeting was adjourned at 8:06pm.



MEMBERSHIP

There are many of you that have DEC 12 expiration dates for your membership and a few that had memberships that expired JUN 12. Would love for all to renew so they can keep the club strong. The list of those that need to renew for Jun 12 and Dec 12 can be found at:

<http://www.garlic.com/~lbha/NeedToRenew.pdf>

Please Renew
Today!

This link is found on the main LBHA Page throughout the year. So if you are not sure, check out the list. There is also a list of those that did not renew in DEC 10. If you are not getting e-mails from LBHA, we may not have the correct e-mail or you are blocking LBHA. The Newsletter goes on line the first week of each month, so if you do not get a notice, just check the webpage and then get the correct e-mail to LBHA.

March Performance Horses

Riding Instruction and Training



Samantha March

1270 Fowler Rd.
Newcastle, CA 95658

916.825.5427
smarch05@msn.com

AD FEES For LBHA Members

(Non-Members add \$10 to below fees)

NEWSLETTER ADS Deadline is the 25th of the month
 ½ page: 1year \$60 Includes Business card on Website.
 ½ page: 6mos \$30

Business Card Ad per issue: \$10 / issue
 Business Card Ad/year: \$40/year includes card on Website

DIRECTORY ADS Deadline for Directory ads is March 1
 Full Page Ad: \$25
 ½ Page Ad: \$15
 Business Card Ad: \$10 - Free for **LBHA Business Members**

WEB ADS

Business Card Ad – one year Members \$40
 Classified Ads- Free to Members

NOTE add \$10 to fee for Non-LBHA members



Keely Paregian — Proprietor
(916) 663-4124

2001 Rattlesnake Road Newcastle, CA 95658
www.scottscornerhay.com scottscornerhay@gmail.com

For animals large and small.



Leslie Arnott
Broker/Owner
Realty

300 Harding Blvd., Ste. 214 B
Roseville, CA 95678
Fax: (916) 773-8190

www.LeslieArnott.com
Email: LeslieArnottRE@aol.com
DRE# 01012813

Top 1% Nationally for 19 Years

[916] 773-6139

Client Benefits Card™
© ClientCards.com

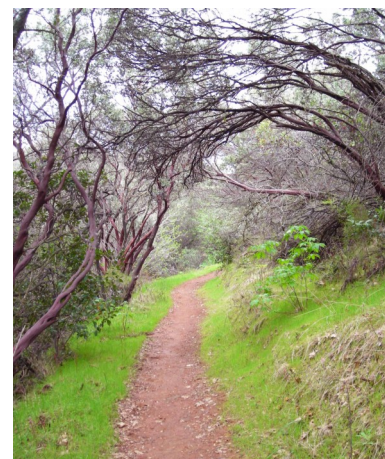
Hidden Falls Opening May 23, 2013

by Robert H. Sydnor, LBHA Trails Committee

The opening day for the new expansion of Hidden Falls Regional County Park is scheduled for Thursday, May 23, 2013. This expansion will add the 961-acre Spears Ranch, and the total acreage will be nearly 1,200 acres. LBHA was deeply involved with testimony to the Placer County Board of Supervisors on this acquisition.

The trail system will expand from 7 miles to more than 30 miles of excellent trails. About 13 miles of entirely new trails have been constructed to modern trail specifications, and 10 miles of ranch roads have been upgraded.

The key for access to the northwest sector (=Spears Ranch) was the construction of two new bridges across Coon Creek, each over 100-feet in length.



Hidden Falls Regional County Park Superintendent Andrew Mills can be reached at 530-889-6808.

For more information and updates, please visit the Placer County Park website at:

<http://www.placer.ca.gov/departments/facility/parks/hiddenfalls>

New Penryn Facilities for Loomis Basin Equine Medical Center

The target date to move medical equipment into the newly constructed Penryn facilities is Memorial Day weekend, May 25-26-27, 2013. It is best to reschedule routine veterinary visits during this particular time-frame.

The new facilities look fabulous from the outside. After they get settled-in, there will be an Open-House at a convenient date in the near future. For timely updates, visit the LBEMC website and subscribe to their newsletter. <http://lbemc.com/>



A Note from Bob

LBHA now has the ability to project a Powerpoint talk onto the digital screen that hangs on the wall of Round Table Pizza parlor. Our monthly speakers will be able to give talks that include photographs, text, and instructional video.

For the April 2013 LBHA monthly meeting, Robert Sydnor gave members a brief talk using fifty Powerpoint slides on trails and trail construction. A laptop was connected to the flat-screen monitor by use of a special 25-foot long HDMI cable. For example, an instructional video on "Saddle Fitting" by Dr. Kerry Ridgeway, DVM, was also shown.

LBHA members who have instructional videos on equitation or any other aspects of horse training are welcome to bring them in for group presentations during our monthly meetings. If you have been on a horse vacation or attended a regional horse show, we can now have the ability for a high-quality presentations.

Hidden Falls Regional Park Phase II

Grand Opening

Save the Date

May 22 at 11 am

7587 Mears Place

North of Mount Vernon Road between Auburn and Lincoln

Watch For Your Invitation

For More Information Contact:

Parks Administrator

John Ramirez at 530-889-6807

J & K Horse Blanket Cleaning and Repair



Kathy Grech 530.263.4078
gertieshouse@sbcglobal.net



- Blankets
- Sheets
- Coolers
- Hoods
- Splint Boots *
- Bell Boots *
- Shipping Boots *
- Trailer Screens
- Trail Packs

Drop off Locations:

- Echo Valley Feed
- Scott's Corner Feed
- Christensen's
- Superior Feed
- McCourtney Road Equestrian Center

Pick up services available

* Repair Velcro

** Waterproofing Available

**Only quality materials and hardware used in repairs. We build heavy elastic leg straps so no stretching out of shape.

Reporting Trail Predicaments for LBHA Riders

by Robert H. Sydnor, AERC Trail Master & LBHA Board Member

May 2013

A safe horse trail lends itself to an enjoyable experience for equestrians and horses alike. Trail predicaments need to be properly reported with photos, so that proper solutions can be made in a timely manner, based on priorities, budgets, and crew availability.

The four pillars of a successful ride on a mountain trail are: a conditioned and trained horse, a knowledgeable rider with the proper tack, a veterinarian and farrier (back at your stables), and the trail itself.

The broad concept of "the trail" includes: the geology of the trail-bed itself, proper cross-drainage (with rolling grade-dips), proper axial gradient (steepness), adequate width of the trail-bed, proper trail signage, and proper clearance of vegetation (lateral and overhead). Whenever possible, carry hand-clippers in your horn-bag, along with your first-aid kit and canteen.

A few riders seem to have memory only about the "worst" trail predicament they ever encountered, and the "most fabulous" trail that they successfully rode. This colorful folklore is emotively reported in blogs on the Internet; but in reality, this does not have abiding value to actually fixing the problem on the trail itself.

Immediately after a trail predicament, try hard to remember to take photographs of the situation (looking both up and down the trail) because "a picture is worth a thousand words."

In the context of the severe drought of Spring 2013 and high temperatures, it is expected that there will be significant deadfall of trees across horse trails. In extreme heat, the tree urgently sends too much sap upward, creating a top-heavy tree that subsequently overturns at the stump.

Conjure-up images of a fallen tree across the trail, a landslide, a fallen boulder blocking the trail, a washed-out trail-bed, slick rock, dense brush, snaring blackberry vines, poison-oak, Scotch broom, and ceanothus (white-thorn). Forgot your camera? No problem; have temerity and be level-headed: take pertinent photographs with your iPhone camera of the trail-bed. If it is a fallen tree, try hard to estimate the diameter of the tree-trunk where it crosses the trail-bed. A 36-inch diameter tree is vastly more complicated than a 4-inch diameter branch.

Try to prioritize the suggested work by using triage: Is this situation urgent for public safety, or is this second-level priority for trail maintenance? What is the best access for foot crews? It is not necessarily the way that you rode in from a particular staging area.

Write-up your trail report and plot the location of the trail predicament on the trail map. If possible, use Milepost numbers or GPS coordinates.

Notify the Land Owner with your one-page written report (photos, mapped location, brief text) using the Trail Report form in the LBHA website. In most local situations for our LBHA members, the Land Owner is Folsom Lake State Recreation Area; Auburn State Recreation Area; the U.S. Forest Service (Foresthill Ranger Station for Tahoe National Forest, and Georgetown Ranger Station for Eldorado National Forest), U.S. Bureau of Land Management (for Cronan Ranch), and Placer County Park District (for Hidden Falls Regional Park). Our LBHA contact with these local agencies is Kathy Dombrowski.

Alternatively, a very good website for reporting trail predicaments is ParkWatch: <http://www.parkwatchreport.org/>

The point is that a reliable report with photographs is far more effective than a vague story or emotive telephone call that is not geographically fixed to a specific location along a trail. Work together for better safety on horse trails by reporting predicaments in a timely manner to the proper authorities. Volunteer to work occasionally on trail maintenance for the local government agencies. They have official volunteer forms for this worthy endeavor.



5 Tips For Equine Hydration & Water Management

The dog days of summer have arrived. You've caught some rays, hit the pool, planned some summer get-aways and had a few cookouts, but have you made a hydration plan for your horse? With temperatures on the rise, it's crucial that you monitor the water consumption of your horse to avoid dehydration and its associated complications.

Did you know the average 1,000 pound horse at rest drinks 8 to 10 gallons of water a day? Add in high temperature and humidity and a horse at work can drink twice as much in the summer. That's a lot of water! So how can you get your horse to drink more?

Keep Your Horse Hydrated

Clean & available water

Make sure your horse has easy access to water at all times. He shouldn't have to go searching to find a clean water source. Provide your horse with squeaky clean water. Tipped over, leaky, funky smelling water buckets aren't appealing to drink from. If you wouldn't want to drink the water chances are your horse wouldn't want it either. Develop a weekly water bucket and trough cleaning schedule.

Encourage drinking

Offer electrolytes and salt blocks to your horse to stimulate their thirst. Like humans, horses use sweating as a way to cool off during periods of warm weather and while exercising. When a horse sweats, not only is water lost, but important electrolytes like sodium, chloride and potassium are lost.

If too many electrolytes are lost serious problems like fatigue, muscle cramps and colic can occur. Electrolytes can be given to your horse in a variety of ways. You can add water and administer via dosing syringe, add the electrolytes to your horse's feed or add the electrolytes to their water. Each way works equally as well, just figure out what your horse prefers to ensure they are consuming the added electrolytes.

Soak it & mash it in feed

Get extra water into your horse through their food. Soak your hay flakes or cubes prior to feeding. One flake of wet hay can absorb 1-2 gallons of water. This can have a huge impact on your horse's water consumption. Adding water to your horse's feed or bran to create a mash is another excellent way to up their water intake.

Keep their water cool

You may have thought about getting insulated water buckets for your horse in the winter time to keep water from freezing, but did you know they can also help keep your horse's water cool in the summer? Horses prefer cool water in the heat. These insulators work like a koozie cup on a soda can and surround the bucket keeping cool water cool.

Spice it up

Have a picky drinker on the road? Flavor the water with Kool-Aid, peppermint oil, apple juice. The additional flavor will keep your horse interested in what otherwise could be strange water. Test this out prior to hitting the road to make sure you have a flavor combo your horse likes.

Horse Dehydration Test

Still not sure if your horse has drunk enough water? Use the pinch test as a quick and easy way to tell if your horse is hydrated. Pinch a bit of skin at the point of your horse's neck and release it. Count the seconds until the skin lies flat. If it flattens back in place in less than a second, no worries your horse is hydrated. If it takes more than three seconds to flatten your horse is dehydrated, use the tips above to get more water in him.

MEMBERSHIP FORM
LOOMIS BASIN HORSEMEN'S ASSOCIATION

The Loomis Basin Horsemen's Association, founded in 1984, is a non-profit informational and awareness organization dedicated to the Arena at the Loomis Basin Community Park, Loomis Basin Trails, Traylor Ranch, and the preservation of the Rural Lifestyle

_____ INDIVIDUAL (\$15) _____ FAMILY (\$20) _____ BUSINESS (\$25)
Please submit business card for
Roster _____ NEW MEMBERSHIP _____ RENEWAL _____

PLEASE INDICATE COMMITTEE(S) YOU WOULD LIKE TO SERVE ON
CHECK AREAS OF INTEREST

_____ Arena	_____ Membership	_____ Trail Riding
_____ Trail	_____ Phone	_____ Western Horseshows
_____ Publicity	_____ County Liaison	_____ English Horseshows
_____ Newsletter	_____ Traylor Ranch	_____ Endurance
_____ Horseshow	_____ Anywhere	_____ Dressage
_____ Work Days		_____ Roping/Cutting
		_____ Other _____

I would like to contribute _____ to the Equestrian Fund or _____ to the Traylor Ranch Fund. Contributions to either Fund are Tax Deductible and will be used for construction and maintenance of the Arena at the Loomis Basin Community Park, and for Maintenance of Basin Trails OR for Maintenance and upkeep of the Traylor Ranch Nature Reserve.

TRAILER PARKING KEYS: Keys are available to members at \$.00 and \$10 to non-LBHA members. Check here if you need a Key _____

KEY NUMBER _____ to be filled in by LBHA)

Name _____ Date _____
Business name: _____ Juniors _____
Address _____ Juniors _____
City _____ Zip _____

Phone _____ E-Mail Address _____

AMOUNT ENCLOSED for
DUES, TRAIL/ARENA FUND,
Or KEYS _____
Make Checks out to LBHA
and mail to:

TRAYLOR RANCH FUND _____
(Please make out a separate check) _____
LBHA
P. O. Box 2326
Loomis CA 95650

LOOMIS BASIN HORSEMEN'S ASSOCIATION

RELEASE AND HOLD HARMLESS AGREEMENT

The Undersigned assumes the unavoidable risks inherent in all horse-related activities, including but not limited to bodily injury and physical harm to horse, rider and spectator. The Undersigned acknowledges that horse-related activities are dangerous and that horses themselves have unpredictable temperaments which can sometimes cause injury. The Undersigned acknowledges that even the most experienced horse event sponsor, participant or horse owner cannot predict how each individual horse will react in a variety of situations and cannot guarantee my safety. THEREFORE, BY SIGNING BELOW, I KNOWINGLY ASSUME THE UNAVOIDABLE RISKS INHERENT IN ALL HORSE-RELATED ACTIVITIES, WHETHER KNOWN OR UNKNOWN, INCLUDING BUT NOT LIMITED TO BODILY INJURY AND PHYSICAL HARM TO HORSE, RIDER AND SPECTATOR, AND AGREE TO THE FOLLOWING ON BEHALF OF MYSELF AND MY SPOUSE, IF ANY:

1. I HEREBY RELEASE AND DISCHARGE LOOMIS BASIN HORSEMEN'S ASSOCIATION ("LBHA"), THE LBHA BOARD OF DIRECTORS, ALL LBHA OFFICERS AND INDIVIDUAL CLUB MEMBERS AND THEIR AGENTS, EMPLOYEES, OR REPRESENTATIVES, AS WELL AS PLACER COUNTY, (HEREINAFTER COLLECTIVELY KNOWN AS "RELEASEES") FROM ALL ACTIONS, CLAIMS OR DEMANDS I MAY NOW OR HEREAFTER HAVE FROM INJURY, DEATH OR DAMAGE RESULTING FROM MY PARTICIPATION IN ANY HORSE-RELATED ACTIVITIES SPONSORED BY LBHA, AT LOOMIS BASIN HORSEMEN'S ARENA OR AT ANY OTHER LOCATION.

2. I also EXPRESSLY WAIVE any rights I may have under California Civil Code §1542, which states: "A general release does not extend to claims which the creditor does not know or suspect to exist in his favor at the time of executing the release, which if known by him must have materially affected his settlement with the debtor."

5. I agree that I will DEFEND, INDEMNIFY AND HOLD HARMLESS Releasees against all claims, demands, and causes of action, including court costs and actual attorney's fees, arising from any proceeding or lawsuit brought against them due to any act done by me, or brought by me or for my benefit.

I HAVE READ THIS RELEASE AND WAIVER OF LIABILITY AND INDEMNITY AGREEMENT CAREFULLY AND COMPLETELY, AND FULLY UNDERSTAND ITS CONTENTS. I AM AWARE THAT THIS IS A RELEASE OF LIABILITY AND A CONTRACT BETWEEN MYSELF AND RELEASEES, AND I SIGN IT OF MY OWN FREE WILL. I FURTHER AGREE THAT NO ORAL REPRESENTATIONS, STATEMENTS OR INDUCEMENTS APART FROM THE FOREGOING WRITTEN AGREEMENT HAVE BEEN MADE, AND THAT I RELY ON NONE. THIS AGREEMENT SHALL REMAIN IN EFFECT UNTIL REVOKED IN WRITING BY ME.

Signature(s) _____

Name (s) _____ Age, if minor _____

If minor, Parent or Guardian must sign _____

Name of Parent or Guardian: _____



Blanket Repairs R Us

We Wash and Repair Horse Blankets

We Service

Blankets — Hoods — Sheets -- Coolers — Saddle Pads — Stall Drapes

Barn Rags — And much More

Washing & Repairs

◇Heavy Wash ◇Waterproofing ◇ Anti-Fungal Washes ◇ Replace Hardware

Pickup and Delivery Available to your Home or Ranch

(fee may apply, with TEN or

more blankets NO FEE charged)

Contact: **Vonnie Bays** - Owner / manager

697 Havenwood Drive, Lincoln, CA 95648 916 645-9000 LVBAYS@wavecable.com

Next Meeting.

MAY LBHA MEETING - MAY 15- Round Table Pizza in Loomis. Eat at 6:30. Meet at 7:00. Back country horsemen president Mike Kohlbake.

JUNE LBHA MEETING - JUNE 19- Traylor Ranch. 6:30 pm. Traylor Ranch Nature Walk with tour guide Dave Faoro.

Stall with paddock available at private barn in Lincoln/Newcastle area. 85'x135' Covered arena. Grass hay fed twice daily. Contact Nancy (916)645-9659



Lazy U Ranch

Massage Therapy

Tammy Haas

Certified Massage Practioner
Lic. #29837

2610 Swetzer Rd
Loomis, CA 95650

916-947-4492



Dean and Denise Howell
"The Howell Team"
Real Estate Specialists



deananddenise.com

DRE #s 00982650 & 01110357
dean.howell@cbtnorcal.com
denise.howell@cbtnorcal.com
M. 916.599.9338 M. 916.207.2543
500 Auburn Folsom Rd., Ste 300., Auburn, CA 95603





From the Loomis Basin Horsemen's Association

Renew your membership.

www.garlic.com/~lbha/NeedToRenew.pdf

ABOUT LBHA

The Loomis Basin Horsemen's Association founded in 1984 is a non-profit 501 (C) 3 information and awareness organization dedicated to the South Placer County Trails, Traylor Ranch, the Arena at the Loomis Basin Community Park and the Preservation of the Rural Lifestyle.

Loomis Basin Horsemen's Association

P.O. Box 2326
Loomis CA 95650

E-MAIL:
lbha@garlic.com

We're on the Web!

~~See us at~~
www.garlic.com/~lbha

Get Info on

- Trails
- The Arena at the Park
- Meetings
- Clinics
- Traylor Ranch
- LBHA Horseshow

